

# State of Wyoming Corner Record

(In compliance with the **CORNER PERPETUATION AND FILING ACT**, Wyoming Statutes, 1977 Section 36-11-101, et. seq., and the Rules and Regulations of the Board of Professional Engineers and Professional Land Surveyors)

Reverse side of this form may be used if more space is needed.

Record of original survey and citation of source of historical information (if corner is lost or obliterated). Description of corner monumentation evidence found and/or monument and accessories established to perpetuate the location of this corner. Sketch of relative location of monument, accessories, and reference points with course and distance to adjacent corner(s) (if determined in this survey). Method and rationale for reestablishment of lost or obliterated corner.

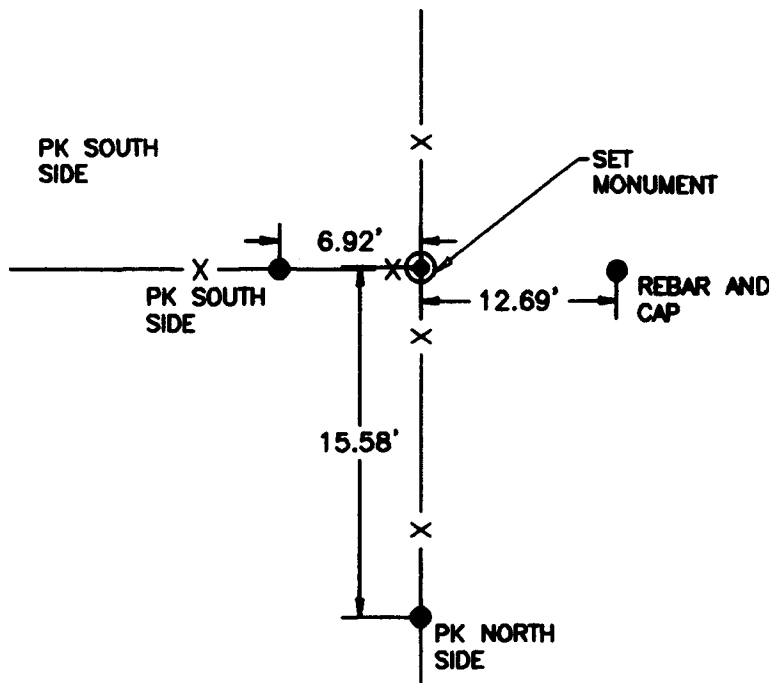
**FOUND:** 24" X 1/2" REBAR ORIGIN UNKNOWN

**GLO RECORD:** SET SANDSTONE 16" X 10" X 6"  
ON AUGUST 20, 1872

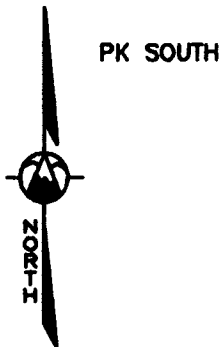
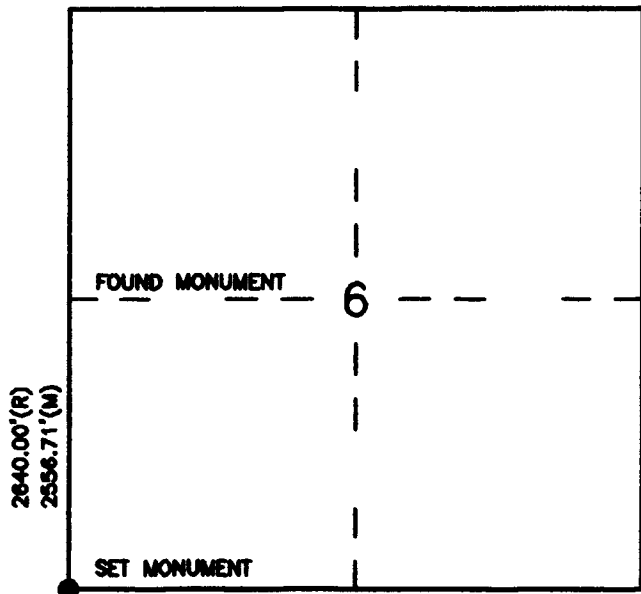
**SET:** 3' X 36" DIA. ALUMINUM PIPE MONUMENT  
STAMPED ACCORDINGLY SEE MONUMENT  
INSCRIPTION SKETCH

**REFERENCES:** 1- 24" X 5/8" REBAR WITH 1 1/2"  
ALUMINUM CAP STAMPED PLS 566  
2- PK NAILS WITH WASHERS STAMPED  
PLS 566 IN FENCEPOSTS

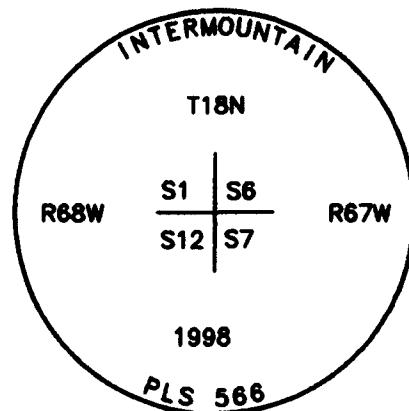
## Reference Locations



## Monument Location



## Monument Inscription



Date of Field Work: 11/17/98

Office Reference: 3071C

## Cross Index Plat

|   |   |    |    |    |    |    |    |   |   |    |    |    |    |    |    |    |    |    |    |    |    |    |    |    |    |
|---|---|----|----|----|----|----|----|---|---|----|----|----|----|----|----|----|----|----|----|----|----|----|----|----|----|
|   | 1 | 2  | 3  | 4  | 5  | 6  | 7  | 8 | 9 | 10 | 11 | 12 | 13 | 14 | 15 | 16 | 17 | 18 | 19 | 20 | 21 | 22 | 23 | 24 | 25 |
| A |   |    |    |    |    |    |    |   |   |    |    |    |    |    |    |    |    |    |    |    |    |    |    |    |    |
| B |   |    |    |    |    |    |    |   |   |    |    |    |    |    |    |    |    |    |    |    |    |    |    |    |    |
| C |   | 6  | 5  | 4  | 3  | 2  | 1  |   |   |    |    |    |    |    |    |    |    |    |    |    |    |    |    |    |    |
| D |   |    |    |    |    |    |    |   |   |    |    |    |    |    |    |    |    |    |    |    |    |    |    |    |    |
| E |   |    |    |    |    |    |    |   |   |    |    |    |    |    |    |    |    |    |    |    |    |    |    |    |    |
| F |   |    |    |    |    |    |    |   |   |    |    |    |    |    |    |    |    |    |    |    |    |    |    |    |    |
| G |   | 7  | 8  | 9  | 10 | 11 | 12 |   |   |    |    |    |    |    |    |    |    |    |    |    |    |    |    |    |    |
| H |   |    |    |    |    |    |    |   |   |    |    |    |    |    |    |    |    |    |    |    |    |    |    |    |    |
| I |   |    |    |    |    |    |    |   |   |    |    |    |    |    |    |    |    |    |    |    |    |    |    |    |    |
| J |   |    |    |    |    |    |    |   |   |    |    |    |    |    |    |    |    |    |    |    |    |    |    |    |    |
| K |   |    |    |    |    |    |    |   |   |    |    |    |    |    |    |    |    |    |    |    |    |    |    |    |    |
| L |   | 18 | 17 | 16 | 15 | 14 | 13 |   |   |    |    |    |    |    |    |    |    |    |    |    |    |    |    |    |    |
| M |   |    |    |    |    |    |    |   |   |    |    |    |    |    |    |    |    |    |    |    |    |    |    |    |    |
| N |   |    |    |    |    |    |    |   |   |    |    |    |    |    |    |    |    |    |    |    |    |    |    |    |    |
| O |   |    |    |    |    |    |    |   |   |    |    |    |    |    |    |    |    |    |    |    |    |    |    |    |    |
| P |   | 19 | 20 | 21 | 22 | 23 | 24 |   |   |    |    |    |    |    |    |    |    |    |    |    |    |    |    |    |    |
| Q |   |    |    |    |    |    |    |   |   |    |    |    |    |    |    |    |    |    |    |    |    |    |    |    |    |
| R |   |    |    |    |    |    |    |   |   |    |    |    |    |    |    |    |    |    |    |    |    |    |    |    |    |
| S |   |    |    |    |    |    |    |   |   |    |    |    |    |    |    |    |    |    |    |    |    |    |    |    |    |
| T |   | 30 | 29 | 28 | 27 | 26 | 25 |   |   |    |    |    |    |    |    |    |    |    |    |    |    |    |    |    |    |
| U |   |    |    |    |    |    |    |   |   |    |    |    |    |    |    |    |    |    |    |    |    |    |    |    |    |
| V |   |    |    |    |    |    |    |   |   |    |    |    |    |    |    |    |    |    |    |    |    |    |    |    |    |
| W |   |    |    |    |    |    |    |   |   |    |    |    |    |    |    |    |    |    |    |    |    |    |    |    |    |
| X |   | 31 | 32 | 33 | 34 | 35 | 36 |   |   |    |    |    |    |    |    |    |    |    |    |    |    |    |    |    |    |
| Y |   |    |    |    |    |    |    |   |   |    |    |    |    |    |    |    |    |    |    |    |    |    |    |    |    |
| Z |   |    |    |    |    |    |    |   |   |    |    |    |    |    |    |    |    |    |    |    |    |    |    |    |    |

Firm/Agency, Address

INTERMOUNTAIN  
PROFESSIONAL SERVICES  
5801 OSAGE AVENUE  
CHEYENNE, WYOMING 82009  
Ph: (307) 632-3138  
Fax: (307) 632-3194

This corner record was prepared by me or under my direction and supervision.

**SEAL & SIGNATURE**



RECORDED 8/12/1999 AT 1:47 PM REC# 258348 BK# 1529 PG# 1676  
DEBRA K. LATHROP, CLERK OF LARAMIE COUNTY, WY PAGE 1 OF 1

Corner Name SW CORNER Section 6, T 18 N, R 67 W, 6th P.M.  
County: LARAMIE Wyoming

Cross-Index No.: E-1